



Ashbourne

Plantation

4  2  2 

Lot 224 Glenlea Boulevard

The perfect balance between entertaining on a grand scale and basking in the peace and tranquility of family life.

The Ashbourne offers privacy, space and versatility in an exceptional home featuring multiple living areas to make family life easy.

A large gourmet kitchen with a walk-in pantry overlooks a spacious meals, alfresco and living area with an integrated study nook. Three bedrooms all with walk-in-robos plus the main bathroom and rumpus room are cleverly separated from the main living area, ideal for families with lots on the go.

This home offers plenty of storage space too, with a big laundry and cloakroom off the double car garage, huge walk in robe in the master suite built in cupboards throughout.

Features:

- 2.7m high ceilings
- Stone benchtops
- Solar panels 5Kw back to grid system
- Ducted reverse cycle air conditioning
- Stainless steel appliances including dishwasher
- Floating flooring to living areas and carpet to bedrooms
- Window treatments
- Landscaping and lawn
- Perimeter fencing, paved paths and driveway
- Clothesline and letterbox
- Smart wiring for NBN



VELO

— AT GLENLEA —

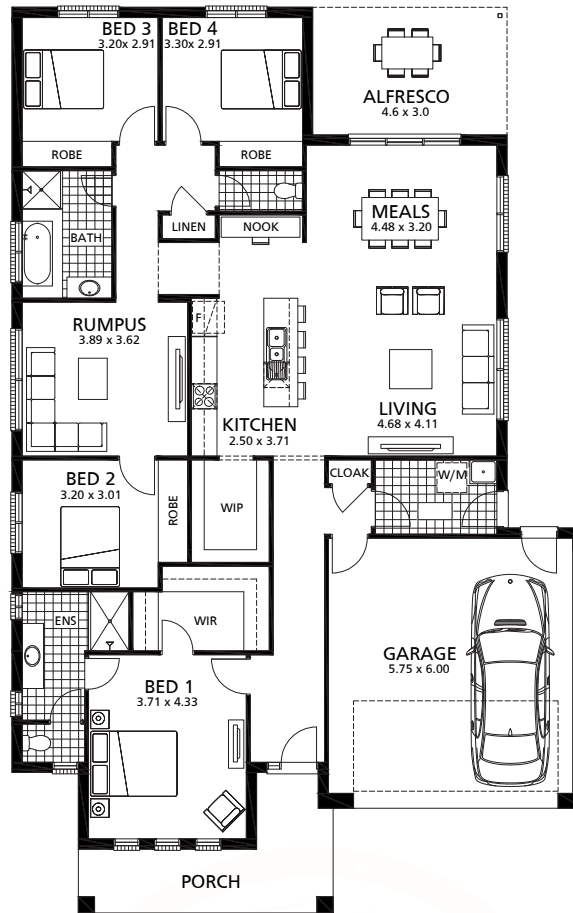
Richard Joy

T 1300 207 170 / M 0439 504 440

sales@glenleamtbarke.com.au

GlenleaMtBarker.com.au

Connekt Urban Projects RLA247093



Living.....	180.09m ²	Total living.....	244.40m ²
Garage	38.67m ²	Land size.....	565.00m ²
Porch.....	11.93m ²		
Alfresco	13.71m ²		

Every precaution has been taken to establish the accuracy of the material herein. Prospective purchasers should not confine themselves to the contents but make their own enquiries to satisfy themselves on all aspects. The Developer and Builder accepts no liability for any loss or damage howsoever arising to any person or corporation who may rely on the information contained in this brochure for any purpose. Images are for illustration purposes only. Rivergum Homes SA builders licence GL113681. Connekt Urban Projects RLA 247093.