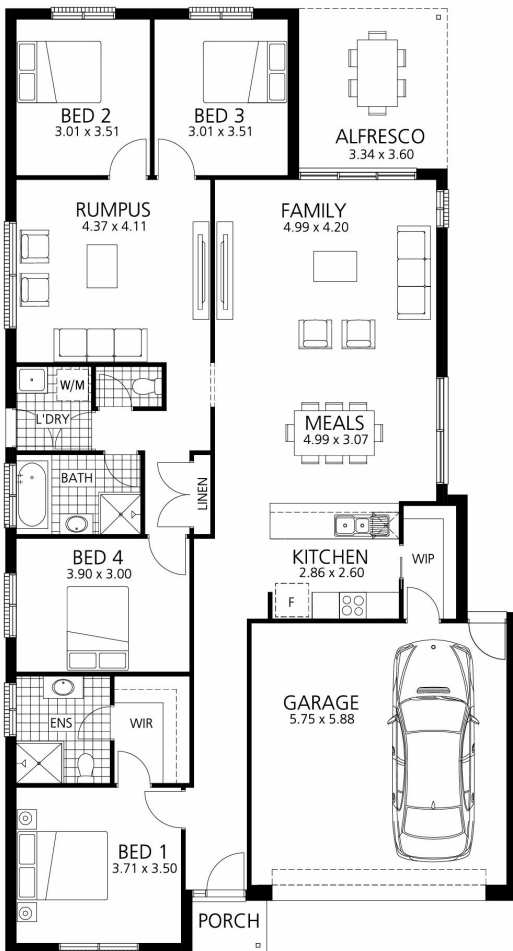


# Aero 2 - (Double garage) - Oxygen

4 2 2 23 sq

Facade name: Accel

## House plan:



## LOT #219

Glenlea

Address: Cedar Avenue, Mount Barker (SA), 5251



572 m<sup>2</sup>

House and land package price:

From **\$429,700\***

## About package:

Inclusions:

- Rivergum Homes Build Time Promise\*
- Generous site costs and footings
- Quality fixtures and fittings
- Overhead cupboards to kitchen with canopy rangehood
- Stainless steel appliances
- Ducted reverse cycle air-conditioning
- Timber laminate floating floor and carpet
- Built-in robes to bedrooms
- Chrome mixer taps throughout
- Instantaneous gas hot water system
- R4.0 ceiling insulation, R2.0 external wall insulation
- Automatic panel lift door

\*refer website for terms and conditions.

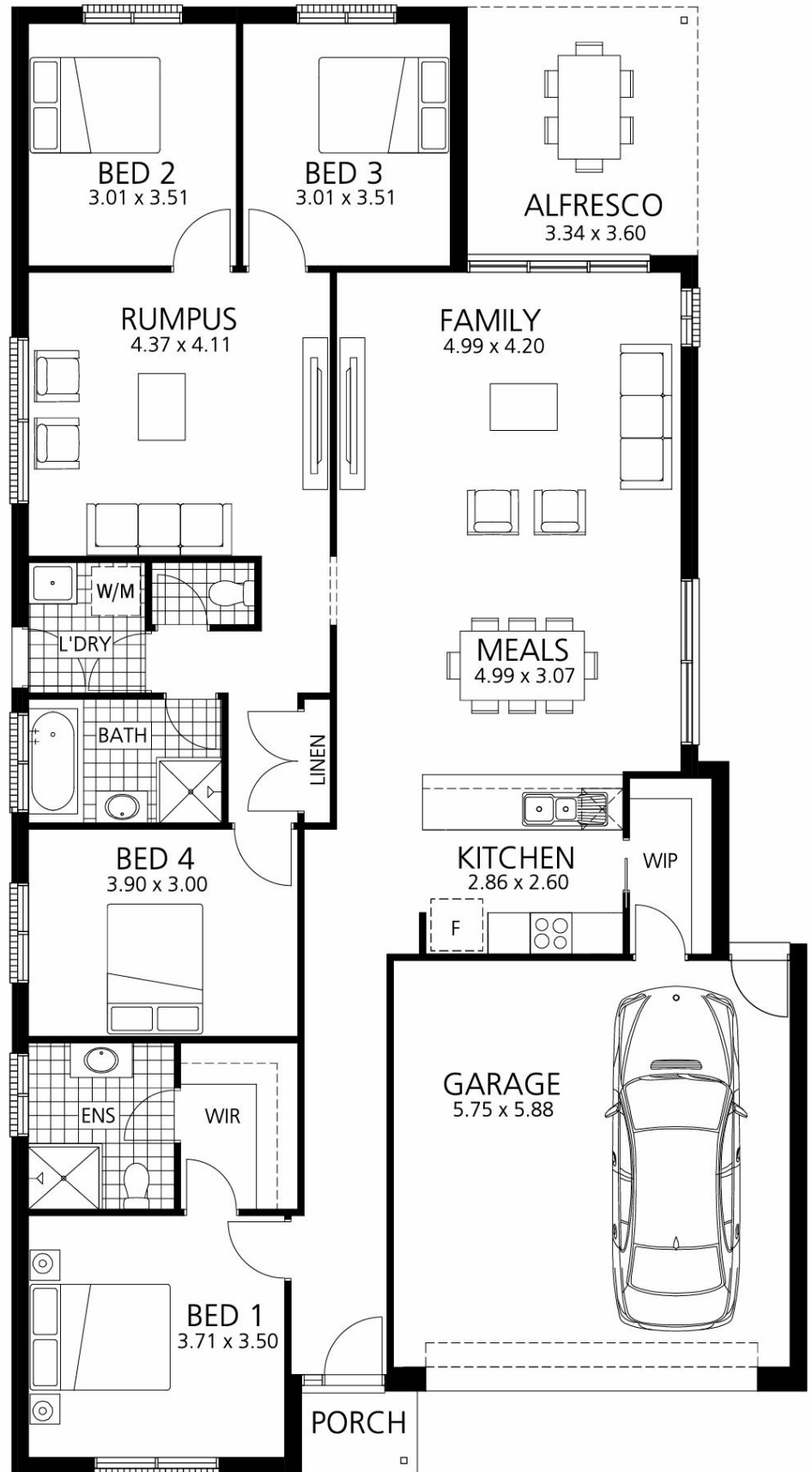
## ENQUIRE NOW:

Damien Gallacher • P: 0478 876 523 • E: d.gallacher@rivergumhomes.com.au

Images depicted on this site are for illustration purposes online. Facades and other images of homes and land estates may include optional upgrades, additional fixtures, finishes and home or estate features that are not included in the base prices of the home or land package such as landscaping, feature tiling, decking, furniture, feature lighting, pools, etc. Land estate pricing and plans are subject to developer guidelines and may vary at any time.

## House Features:

- ✓ 2700mm Ceiling Heights
- ✓ Overhead Cupboards to Kitchen
- ✓ Built-In Robes to Bedrooms
- ✓ Automatic Panel Lift Garage Door
- ✓ Carpet to Bedrooms
- ✓ Timber Laminate Flooring to Living areas & Hallways
- ✓ 25 Degree Roof Pitch
- ✓ Canopy Rangehood
- ✓ NBN Connection
- ✓ Garage conversion
- ✓ Ducted Air Conditioning
- ✓ Alfresco
- ✓ DOWNLITE LED THROUGH OUT
- ✓ Stone Benchtops to Kitchen
- ✓ MEDIUM BUSH FIRE ALLOWANCE



## ENQUIRE NOW:

Damien Gallacher • P: 0478 876 523 • E: [d.gallacher@rivergumhomes.com.au](mailto:d.gallacher@rivergumhomes.com.au)

Images depicted on this site are for illustration purposes online. Facades and other images of homes and land estates may include optional upgrades, additional fixtures, finishes and home or estate features that are not included in the base prices of the home or land package such as landscaping, feature tiling, decking, furniture, feature lighting, pools, etc. Land estate pricing and plans are subject to developer guidelines and may vary at any time.