



# Eastbrook Terraces

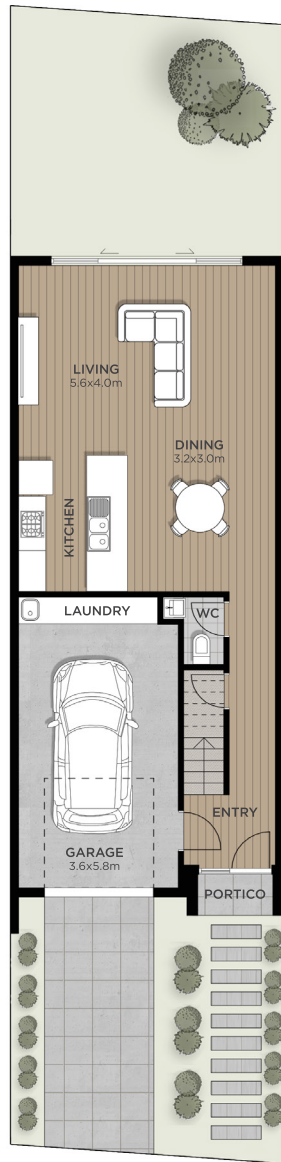
Terrace 12, Cypress Grove

---

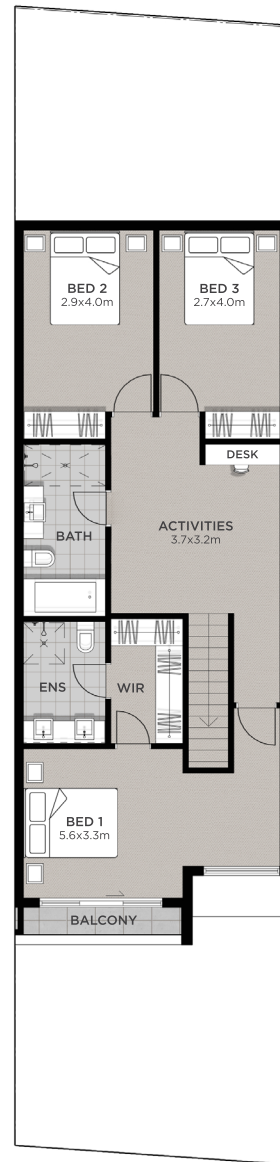
3 bed, 2.5 bath, 1 car

\$398,000





Ground Floor



First Floor

# The design

*Experience the best of hills living in this low-maintenance, modern terrace home built by Custom Built New Homes. Spanning two levels with exceptional views, the Eastbrook terraces boast three upstairs bedrooms, including an executive Master Suite with it's very own retreat.*

*An expansive kitchen, living*

*and dining area will be the envy of your friends, while the rear courtyard will provide the space you need to entertain, or simply relax and unwind while breathing in the fresh hills air.*

*The Eastbrook terraces provide the perfect balance for those who appreciate both luxury and a low-maintenance lifestyle.*

## Area schedule

Ground Main Living	65.8m <sup>2</sup>
Upper Main Living	90.0m <sup>2</sup>
Garage	22.2m <sup>2</sup>
Portico	2.0m <sup>2</sup>
Balcony	2.7m <sup>2</sup>
<b>TOTAL HOUSE</b>	<b>182.7m<sup>2</sup></b>
<b>TOTAL LAND</b>	<b>150.0m<sup>2</sup></b>





# Features

- 20mm Mirostone benchtops to kitchen
- Italian UV painted doors to kitchen
- Floor coverings throughout
- Ducted reverse cycle airconditioning throughout
- 2.0m high tiling to bathroom and ensuite
- Westinghouse appliance package
- Premium semi-frameless shower screens
- LED downlights to living areas, entry and hallway
- TV antenna and NBN provisions installed
- Larger cornices, architraves and skirtings
- Custom built-in cupboards and benchtop to laundry
- 3 x coat paint system
- 6 star energy efficiency rating
- Rinnai instantaneous hot water service
- 1000L Slimline Poly rainwater tank and pump
- Gliderol 'Native Series' panel-lift garage door
- Exposed aggregate concrete to driveway and front path
- Concrete to rear paths
- Rear fencing, landscaping and stormwater
- 2.7m ceilings
- Colorbond 'True Oak Deep' roof sheeting
- Rainwater tank provisions
- Gainsborough G4 Series door lever sets
- Austral Bricks 'Urban One' range
- Overhead cupboards to kitchen with bulkhead over
- Enclosed garage under main roof
- 90mm timber frame walls
- Higher internal doors - 2340H





## Contact

*Richard Joy*

*0439 504 440*

*[sales@glenleamtarker.com.au](mailto:sales@glenleamtarker.com.au)*

*[www.glenleamtarker.com.au](http://www.glenleamtarker.com.au)*



Subject to availability. All plans are copyright. All images and plans shown are for illustrative purposes only. Floorplans will vary according to façade type and all sizes are approximate. The developer reserves the right to alter designs and pricing without notice. All prices are inclusive of GST, council approval and energy efficiency assessment. Conditions apply. E&OE. SA Builder's Licence BLD266307. ABN 14 603 728 490. RLA247093.