

A new way to build.
A better way to live.

CONTACT SALES AGENT

RICHARD JOY
CONNEXT URBAN PROJECTS - RLA247093

0439 504 440
richardj@connektup.com.au



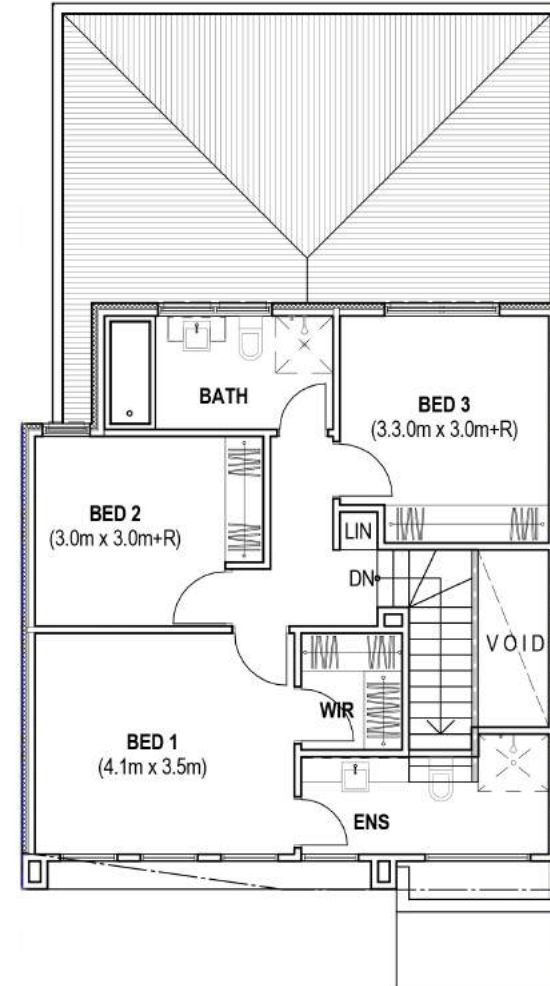
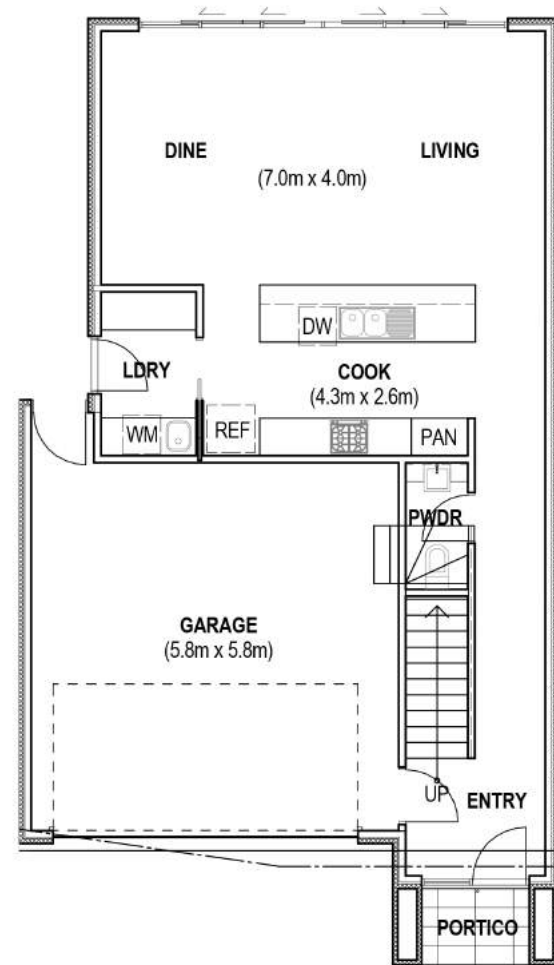
THE BELMONT - NORTH

**LOT 190 GLENLEA BOULEVARD
GLENLEA, MOUNT BARKER**

3 BED 2 BATH 2 CAR

custombuiltnewhomes.com.au





STANDARD INCLUSIONS

The below inclusions are offered as standard when you build with Custom Built New Homes.

- FREE INCLUSION - Italian UV Painted Doors to Kitchen - for a LIMITED TIME
- 6 Star Energy Rating
- 2.7m Ceilings
- Larger Cornices, Architraves & Skirtings
- NBN Ready Provisions
- Soft Close Joinery
- Overhead Cupboards to Kitchen
- Custom Built-in Cupboards & Benchtop to Laundry
- 3 Coat Paint System
- True Oak Colorbond Roof & Colorbond Gutters
- Rainwater Tank Provisions
- Austral Bricks Premium Urban One Range
- Premium Semi-frameless Shower Screens
- Westinghouse Appliances
- Rinnai 26 Instantaneous Hot Water Service
- Gainsborough Door Lever Sets
- LED Downlights to Living Areas
- 90mm Timber Frame Walls
- Enclosed Garage Under Main Roof
- Panel Lift Garage Door (Standard Colour) in lieu of Roller Door
- Ducted Reverse Cycle Airconditioning Throughout
- Timber Laminate to Living Areas & Carpet Floor Coverings to Upper Level & Staircase
- 20mm Mirostone Benchtops to Kitchen
- Upgrade External & Internal Door Head Heights to 2340H in Lieu of 2040H
- Supply & Install TV Antenna
- Tiling Upgrade to 2.1m High Tiling in Lieu of 1.2m

THE DESIGN

The Belmont (North) is a contemporary 2-storey design featuring 3 bedrooms, 2 bathrooms and a double garage. With high-level specifications and inclusions that you would expect from a much higher pricetag, The Belmont offers exceptional value and a contemporary lifestyle in Mount Barker's most beautiful land estate.

FEATURES

- FREE INCLUSION - Italian UV painted doors to kitchen (for a limited time)
- Westinghouse appliances
- Timber laminate and carpet flooring
- 20mm Mirostone benchtops to kitchen
- Double garage with automatic panel lift door
- Ducted R/C Airconditioning throughout
- 2.7m high ceilings

MEASUREMENTS

Lower Main Living	68.5m ²
Upper Main Living	72.8m ²
Garage	37.0m ²
Portico	3.1m ²
TOTAL HOUSE	181.4m²
TOTAL LAND	188m²
FRONTAGE	8.5m

PRICE \$369,000

All images are for illustrative purposes only. Custom Built New Homes BLD 266307.